

(1) Type Examination Certificate


- (2) No. of the Type Examination Certificate: **ZP/B044/18** replaces ZP/B091/15
- (3) Product: **Roof safety hooks type B**
Type: ABS-Lock® DH-04-OG and ABS-Lock® DH-04-F
- (4) Manufacturer: **ABS Safety GmbH**
- (5) Address: **Gewerbering 3, 47623 Kevelaer, Germany**
- (6) The design of this product and any acceptable variation thereto are specified in the schedule to this type examination certificate.
- (7) The certification body of DEKRA EXAM GmbH certifies that this product comply with the fundamental requirements of the standard listed under item 8 below. The examination and test results in the test and assessment report PB 18-031.
- (8) The requirements of the standard are assured by compliance with
DIN EN 517:2006
- (9) This Type Examination Certificate relates only to the design, examination and tests of the specified product in accordance to the standard list. Further requirements of the Directive apply to the manufacturing process and supply of this personal protective equipment. These are not covered by this certificate.
- (10) This Type Test Certificate is valid until 2023-04-11.

DEKRA EXAM GmbH
Bochum, 2018-04-12

signed: Wiegand
Certification body

signed: Mühlenbruch
Special services unit

We confirm the correctness of the translation from the German original.
In the case of arbitration only the German wording shall be valid and binding.


Certification body


Special services unit

TRANSLATION

- (11) Appendix to
- (12) **Type Examination Certificate**
ZP/B044/18
- (13) 13.1 Subject and Type
Roof safety hooks type B
Type: ABS-Lock® DH-04-OG and ABS-Lock® DH-04-F

13.2 Description

The roof safety hook type B, type: ABS-Lock® DH-04 is manufactured in the versions ABS-Lock® DH-04-OG (Fig. 1) and ABS-Lock® DH-04-F (Fig. 2) and is used to hook up ladders and as a single anchor point to secure a person against falls from a height.

The roof safety hook consists of a folded sheet metal ($t = 3 \text{ mm}$).

The screwing takes place on inclined roofs on the designated roof structures. The installation is done by appropriate fasteners which are dependent on the roof structure. The rear two holes in the base plate serve to accommodate the fasteners. The front hole serves for connecting to lighting protection systems. The user can secure himself at the anchor point using his personal protective equipment against falls from a height.

The hook base is intended for hanging a ladder.

The roof safety hook type B, type: ABS-Lock® DH-04-OG is intended for mounting in a rafter with overlapping counter battens.

Moreover, the roof safety hook type B, type: ABS-Lock® DH-04-F is intended for flat roofs such as softwood boards or OSB.

Accordingly, the fold of the sheet is eliminated. The roof safety hook is made of corrosion-resistant steel.

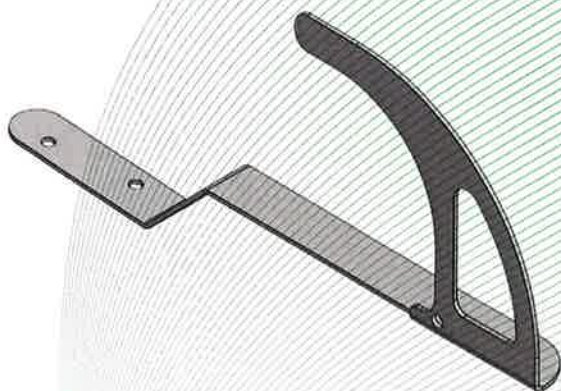


Fig. 1: Roof safety hook type B,
Type: ABS-Lock® DH-04-OG

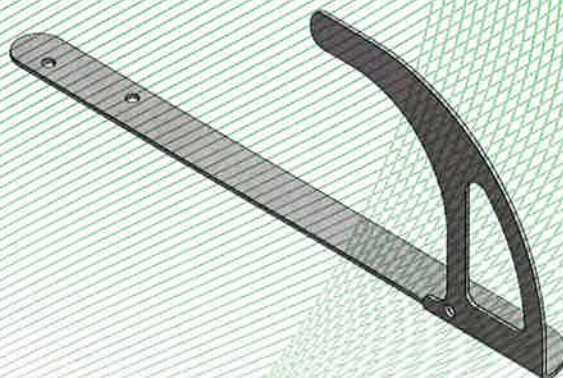


Fig. 2: Roof safety hook type B,
Type: ABS-Lock® DH-04-F

- (14) Test and Assessment Report

PB 18-031 dd. 2018-04-12